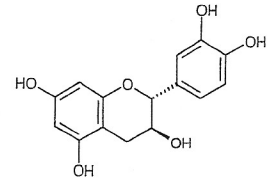


**INDOFINE Chemical Company, Inc.**

121 Stryker Lane, Building 30
 Hillsborough, NJ 08844 USA
 Phone: (908) 359-6778; Fax: (908) 359-1179

**HPLC****Batch: 14****(+)-CATECHIN****020976S****IDENTIFICATION**

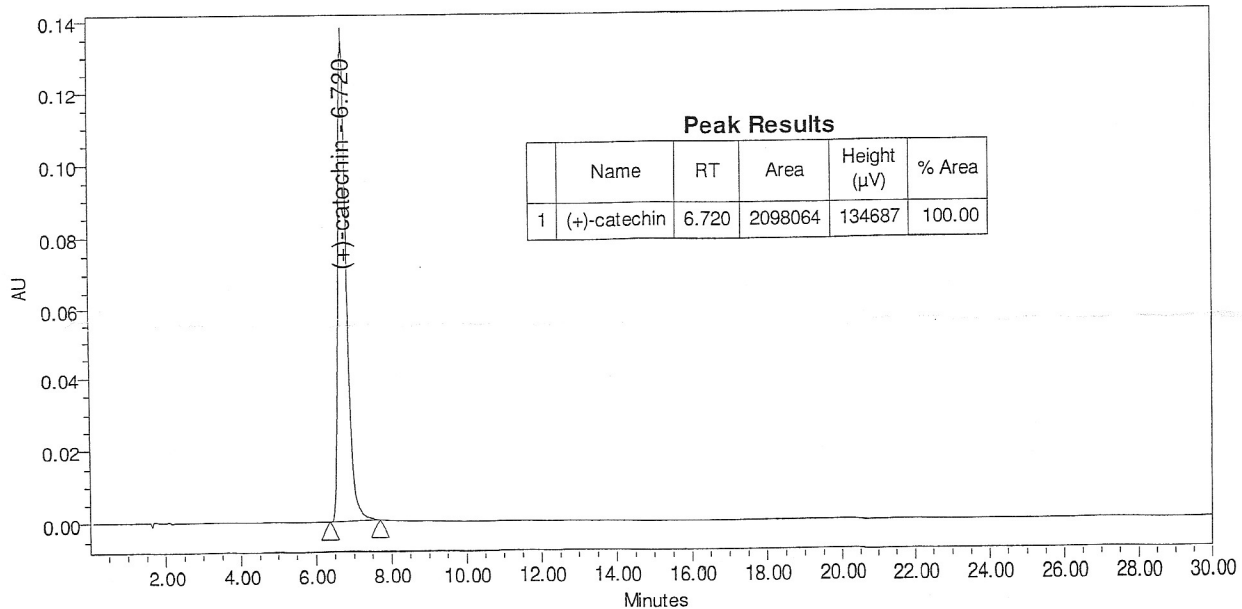
CAS number	[154-23-4]
Chemical family	Catechins, Tanins
Synonym	(+)-3,3',4',5,7-Pentahydroxyflavan
Molecular formula	C ₁₅ H ₁₄ O ₆
Molecular weight	290.28

CERTIFICATE OF ANALYSIS

Appearance	White powder	
Moisture	0.7 %	
Residual solvents	< 0.5%	
Absorption maxima	280 nm in methanol	
[α] _D	+14.1°	c=1 in acetone/water (50/50, V/V)
Thin layer chromatography	support	Silicagel
	solvent	Ethylacetate/methylene chloride/formic acid (60/30/5, V/V/V)
	detection	p-Anisaldehyde/acetic acid/sulfuric acid (1/40/1, V/V/V) 10mn at 110°C
Storage	Store at +2/8°C in a dry and dark place. Place in a desiccator under vacuum before use	

HIGH PERFORMANCE LIQUID CHROMATOGRAPHY

Column	Symmetry Shield RP18® (4.6 x 150 mm), particle size 3.5 μm
Solvent	Water/methanol/acetonitrile (80/10/10, V/V/V)
Flow rate	1 ml/mn
Detector	UV visible 280 nm
Sample solvent	Methanol



Assay by an HPLC method

Date of last QC-recheck February 2012
 Date of retest February 2016

The values given on the 'Certificate of Analysis' are the results determined at the time of analysis.